

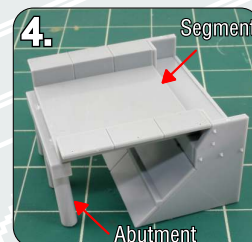
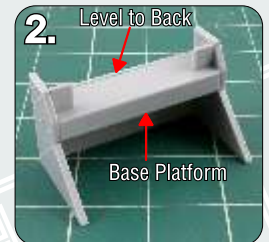
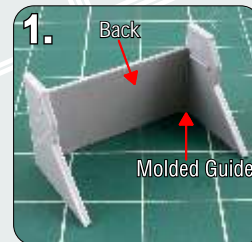
Modern Concrete Segmental Bridge



Increase the bridge length with #591 'Set B' (three additional segments).

Assembly Instructions

1. Remove any flash from the parts with a sharp hobby knife. Start by gluing the side walls to the 'back' (this part is held in place by molded guides on the side walls). We recommend using a CA (cyanoacrylate) type glue to assemble this plastic kit.
2. Glue the base platform to your assembly (note: we recommend test fitting this part prior to gluing). The top of this platform should fit level with the 'back' piece (completed in step 1).
3. To complete the base, simply glue the slanted 'front' part in place (note: the long edge with a near 45 degree angle should face down and align with the base bottom).
4. Glue the first concrete segment in place (use an abutment as your level). Once the segment is secure, glue the first abutment to the segment end and continue this process for the desired length of the bridge (use #591 to extend the bridge length).
5. Remove the scale handrails from their sprue using a sharp hobby knife. Grasp the handrails at a vertical post and gently slide the pole into the provided mounting holes on each segment - continue this process for the length of the bridge. (Note: These handrails are extremely fragile and must be handled with extreme care.) Finish by painting and/or weathering if desired.



See more innovative products at:

BLMAmodels.com